



SecondHalf Coach

Wealth Management



Jessica M. Marazza

Partner/Financial Planner

724-537-2799

jessm@shcwealthmanagement.com

“Think of your life as a puzzle. Not every piece fits perfectly next to another, and each phase of life comes with a different shade and amount of sparkle to it. Wealth doesn’t always have to mean accumulating a lot of assets, and not one puzzle piece is the solution to every person we meet. Knowledge of and understanding your retirement path allow us to craft the puzzle piece that best fits to the road any one client is trying to pave on their way to retirement.”

When it comes to Jess's puzzle, financial planning is merely one piece that fuses with others like family and travel. She's crafted a lifestyle that delicately balances work and personal time, and her roadmap to achieve that lifestyle has become more vibrant as she carves out a legacy for herself personally, professionally and philanthropically.

Growing up in the small town of Bovard (aka Crowsnest), Jess built the foundation to her largest and brightest puzzle piece, family. Her parents Anthony and Mary Beth raised Jess and her younger siblings Stephanie and Anthony amidst hosting family functions, taking annual vacations to the shores of Myrtle or West Palm Beach and road trips to various destinations. Her favorite of those was a round trip road trip from Bovard to Las Vegas the summer before third grade where spots like The Arc in St. Louis and Four Corners held just as much excitement as the Las Vegas strip.

As grade school progressed, Jess became an unwavering Spartan fan, cheering all four years of high school and playing soccer with the club team on evenings and weekends. She also was involved with student council, giving her a taste of what would grow to be a fascination with local and federal government workings as her education progressed.

Always wanting to become a fashion designer and move to New York City, she began her college career at Kent State University. As her first semester unfolded, she realized her infatuation with a career in fashion was more of a passionate hobby. As this thought weighed on her, she considered all other professional areas she loved equally, including statistics and event planning and decided her path needed to shift directions. It was then she transferred to Saint Vincent College to study Marketing and International business which would allow her to express her creativity while utilizing data. In 2009 she graduated Cum Laude with her Bachelor of Science, majoring in Marketing and minoring in International Business.

Not yet ready to commit to a career, Jess extended her college summer job and spent two years working part time at the Municipal Authority of Westmoreland County as a dispatcher and posting clerk. It was here she learned how swing shifts operate, what it meant to be part of a union, and the delicate balance of helping customers in need while sifting through the fallacies claimed at times.

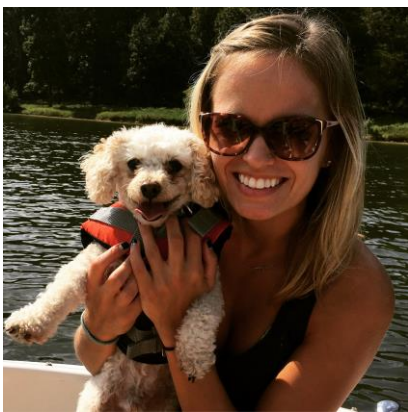
Ready to start her career, Jess's unrelenting drive to succeed and make a difference in people's lives led her to interview with The SecondHalf Coach in 2011. Initially spearheading all communications and business initiatives while focusing on providing clients a meaningful relationship, her role continually evolved since she started. In 2014 she completed all necessary requirements to earn her securities registrations, expanding her career to become a financial planner on the SecondHalf Coach Wealth Management Team. In 2017, she was named partner, solidifying the firm's continuation plan.

Wanting to make a positive impact both in and outside of the office, Jess was thrilled to be chosen in 2016 by SagePoint Financial to create a Millennial Advisor Panel to help young advisors stay on the cutting edge of all opportunities available for financial planners. Participants range in age and geographic location, broadening the information shared and allowing a national disclosure as to where they see the financial field shifting. She also helps with the GOAL Magazine publication connecting and maintaining relationships with local entrepreneurs.

Participating in several philanthropic endeavors, Jess serves as a member of the Westmoreland County Community Foundation Visionaries, which aims to raise awareness and funds for local non-profits by young professionals, sits on the board for Animal Friends Westmoreland, and partakes as a big sister in Big Brothers Big Sisters.

Jess interacts with local students through her involvement with the Greater Latrobe Chamber of Commerce Education Committee, which hosts reality fairs, career directional programs and mock interviews to help students better understand what awaits them post grade school. She is also polishing her leadership skills as a student of the 2017-2018 Leadership Westmoreland class through the Westmoreland Chamber of Commerce. Through a nine-month program, participants experience different facets of the region through private tours and speakers to better gauge what is needed in this area to continue growing and thriving as a community.

Always serving as a source of inspiration and positive energy for those around her, Jess is most enthusiastic about travel experiences and holidays, especially Christmas. From the day after Thanksgiving until Valentine's Day she decorates her home and office with all the Christmas cheer she can find, counting down the sleeps to her favorite day of the year. When she's not looking forward to the next holiday, she's usually counting down to her next adventure. She has had the pleasure of visiting numerous exciting destinations throughout the Caribbean and Europe, the Amalfi Coast and Paris among her favorites.



Along with travel, Jess equally fancies brunch, college football and sports in general. Her family has been passionate Penn State Nittany Lion fans since she was born, and baseball at all levels has always been a favorite of hers. She has a goal to visit every MLB stadium and NCAA college football rivalry in her life, and to this point, considers Fenway Park and LSU's Death Valley to be the most authentic experiences. When weather permits, she enjoys finding local hiking paths and taking boats out with friends for relaxing days in the sun.

Above all else, Jess loves her toy poodle, Prince who has been at her side since 2008. Together, they reside in Monroeville which allows her the benefit of suburb living with easy access to city happenings.

Jess elicits a love for life and the experiences it brings. She takes pride in the foundation she has built to her own life puzzle that she continues to craft and looks forward to the opportunity to help her clients do the same. If Jess could say any one thing would make her career the fullest it could have been looking back years from now, it would be that she helped our clients create their own bright, fulfilling puzzle. Being the youngest member of the wealth management team, she is the future of SecondHalf Coach Wealth Management and one of the energizing forces that helps to keep the firm youthful and modern.