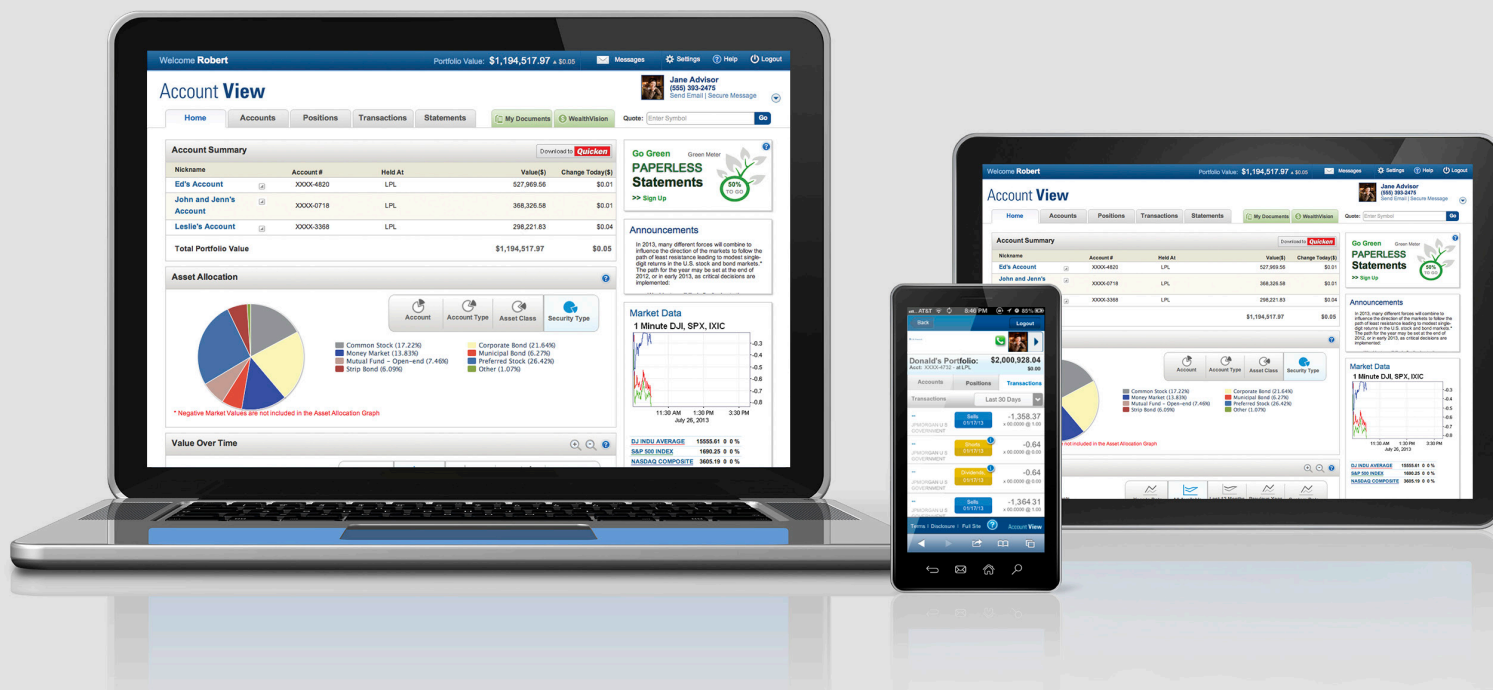


Go Digital with Account View and eDelivery

Secure financial account access anytime, anywhere, on any device.



Say goodbye to snail mail, clutter, and information that's outdated the moment it's printed. Say hello to secure, constant, anywhere online access to your financial information with Account View and eDelivery.

- a** Receive your statements, tax documents, and trade confirmations electronically with eDelivery.
- b** View your total portfolio value, asset allocations, and daily changes, and export financial information for analysis or tracking.
- c** Check market positions, their market value, and gain and loss details.
- d** Review, filter, sort, and download transaction data history from the last two years.
- e** Access quotes, market performance, and news.

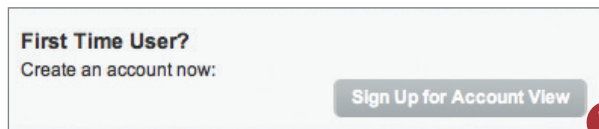


The examples shown are for illustrative purposes only and do not represent an actual account view summary.

GETTING STARTED

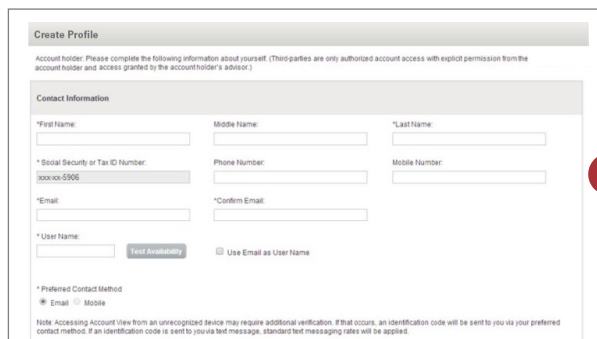
Enrolling is easy. Follow these simple steps:

1



Visit www.myaccountviewonline.com and click Sign Up for Account View.

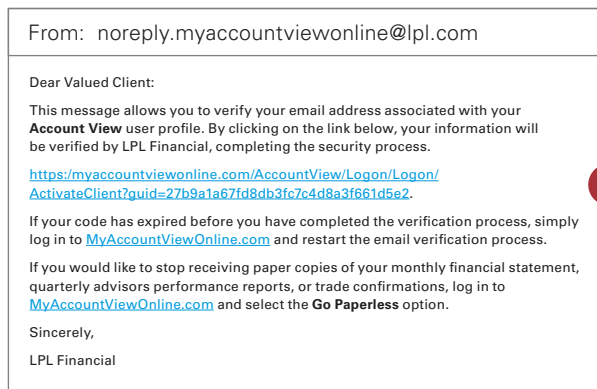
2



Create your confidential and secure profile.

You'll be asked to enter your contact information, and verify the last four digits of your Social Security number. It's secure and safe—we use this information to protect your account.

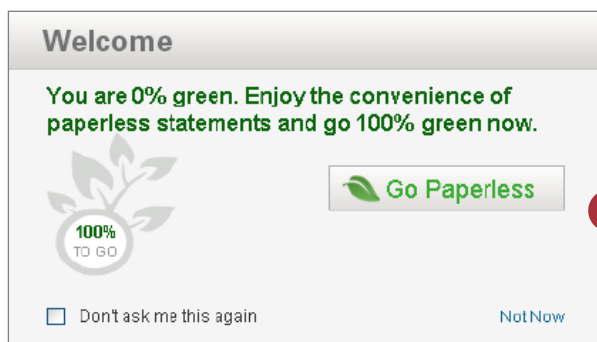
3



Verify your account.

You'll receive an email confirmation to the email address you provided. Only you have access to that email, and only you can activate your Account View access.

4



Opt in to eDelivery by clicking Go Paperless.

Eliminate printed monthly statements and trade confirmations through the mail. You have secure and private access to view these documents online through Account View.

To the extent you are receiving investment advice from a separate registered independent investment advisor, please note that LPL Financial is not an affiliate of and makes no representation with respect to such entity.

Not FDIC/NCUA Insured	Not Bank/Credit Union Guaranteed	May Lose Value	Not Insured by any Federal Government Agency	Not a Bank Deposit
-----------------------	----------------------------------	----------------	----------------------------------------------	--------------------

LPL Financial, a registered investment advisor. Member FINRA/SIPC

