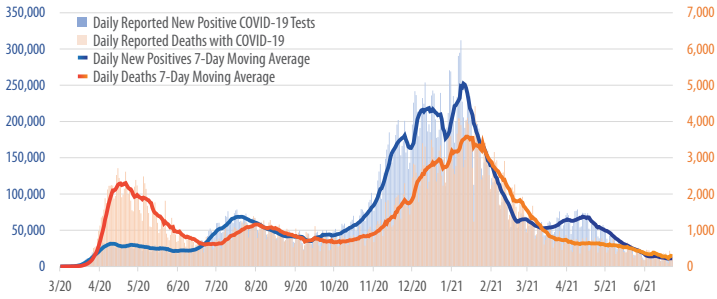


First Trust COVID-19 TRACKER

Daily Reported New Positive COVID-19 Tests vs. Daily Reported Deaths from COVID-19 in the U.S.

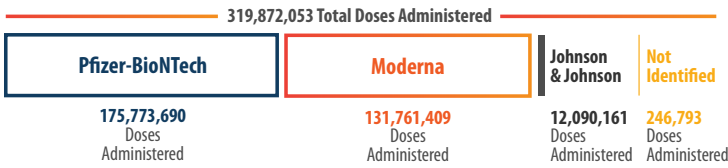
March 1, 2020 - June 22, 2021



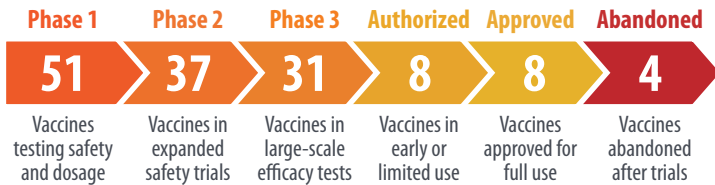
Sources: CDC.gov, First Trust Advisors

U.S. COVID-19 Vaccine Doses Administered by Vaccine Type

As of June 22, 2021



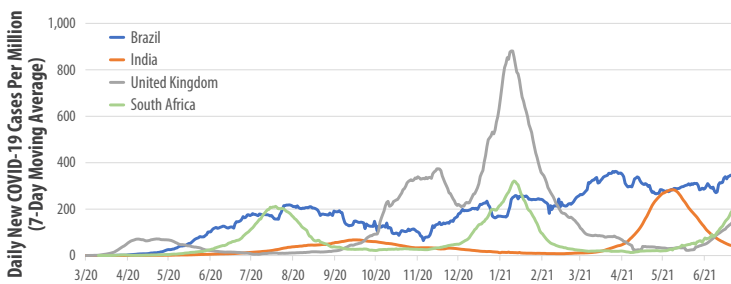
Sources: CDC.gov, First Trust Advisors



Sources: The New York Times, First Trust Advisors. Data as of June 23, 2021.

COVID-19 Cases in Countries with Publicized COVID-19 Variants

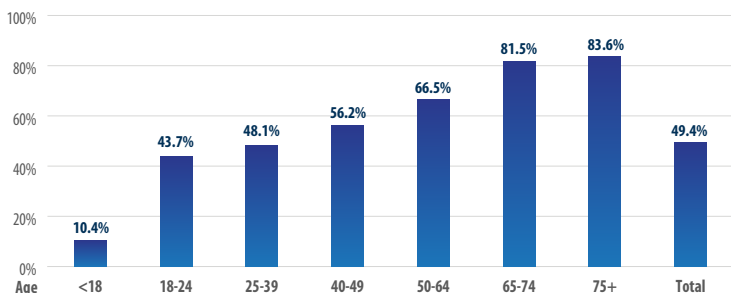
March 1, 2020 - June 23, 2021



Sources: ourworldindata.org, First Trust Advisors

Share of Age Population Who Have Received at Least One COVID-19 Vaccine Dose

As of June 24, 2021



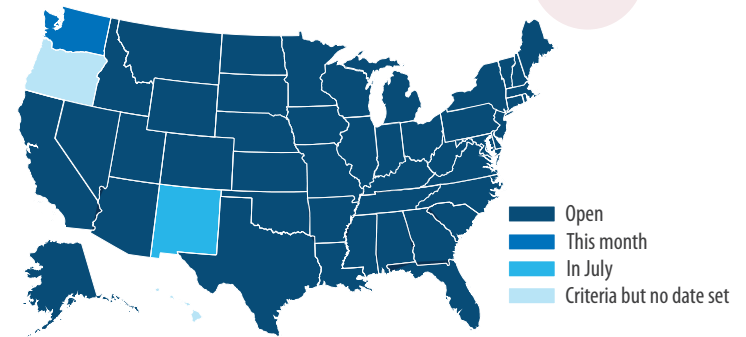
Sources: CDC.gov, Census.gov (population estimates as of 4/1/20), First Trust Advisors

¹CNBC.com (June 24, 2021); ²YouGov.com (June 2, 2021)

New survey data from the nonprofit RAND Corporation suggests that **one out of four teachers is considering quitting after this school year.**¹

When States Plan to Fully Reopen

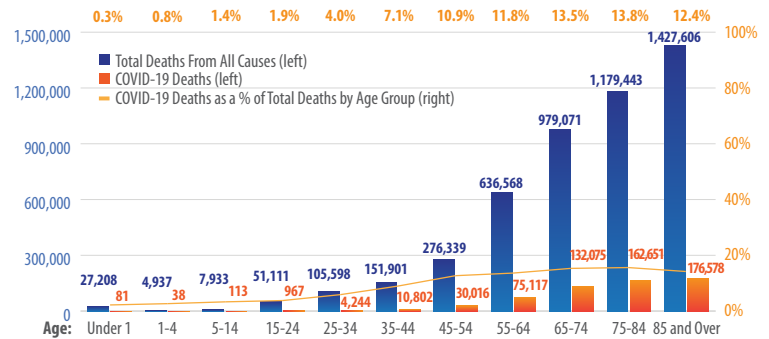
As of June 23, 2021



Sources: New York Times, First Trust Advisors

Total Deaths and COVID-19 Deaths in the U.S. by Age Group

February 1, 2020 - June 19, 2021

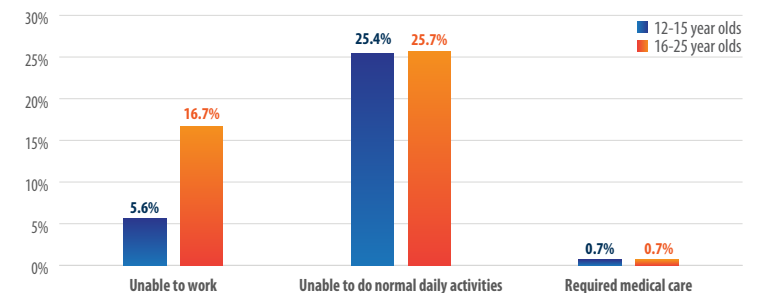


Sources: CDC.gov, First Trust Advisors

According to a recent YouGov survey, **a majority of Americans (58%) now believe COVID-19 originated in a lab. This extends across partisan lines with 77% of Republicans, 65% of Independents, and 43% of Democrats agreeing this is the most likely source of the virus.**²

Health Impact Events Reported 0-7 Days After 2nd Dose of Pfizer-BioNTech COVID-19 Vaccinations in Younger Population

As of June 13, 2021



Sources: CDC.gov, First Trust Advisors