



Put Your Money Where Your Mouth Is

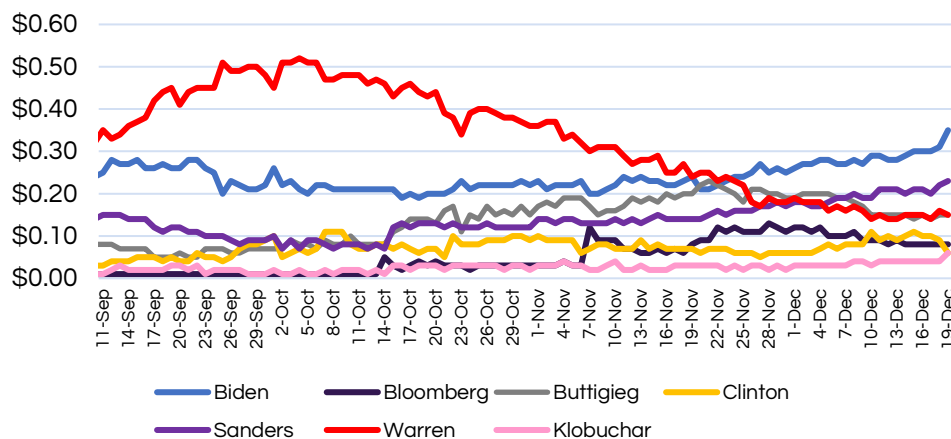
Last night, the seven Democratic presidential candidates took the stage in LA for the sixth and final debate in the 2020 elections, only 24 hours after the House voted to impeach President Trump. Early feedback from several news and media outlets suggests that Minnesota Senator Klobuchar, former Vice-President Biden, and Mayor Buttigieg came out on top, but for different reasons. As an aside, we are counting the minutes until the SNL Cold Open this week.

A clear and confident Senator Klobuchar focused on ideas and policy. Former Vice-President Biden managed a near gaffe-free night, despite being on stage for over three hours. And finally, viewers may have thought Mayor Buttigieg was the front-runner, given the high level of incoming jabs and criticism. Going into the evening, former Vice-President Biden was the clear front runner, attracting roughly 28% of potential voters according to realclearpolitics.com, with Senator Sanders in second place at 19.3% and Senator Warren in third place at 15.2%.

But as we saw in the 2016 elections, polling data could sometime provide for a false positive. So as a little foreshadowing into our 2020

Outlook Report, we provide our preferred mechanism for assessing outcomes from anything from who will be the leader of Hong Kong, to the number of White House tweets over the next week, to the ultimate Democratic Nominee and next POTUS. Herein, we illustrate the current prediction market for the 2020 Democratic Nomination according to predictit.org. As with more

PredictIt 2020 Democratic Presidential Nomination



traditional polling, former Vice-President Biden remains the front-runner, with Senator Sanders a distant second. Notwithstanding last night's improved performance, Senator Klobuchar remains tied with former Secretary of State Clinton (who hasn't even announced YET). Finally, despite finding himself on the defensive for most of the night (a clear indication you are perceived as a threat), Mayor Buttigieg is now tied with Senator Warren, as both candidates have seen their campaigns lose momentum in the eyes of betting markets. Look for more political commentary and similar analysis in our 2020 Outlook, which will be published in about two weeks. We are taking next week off, look to hear from us in the New Year.



Disclosure: The information in this publication and references to specific securities, asset classes and financial markets are provided for illustrative purposes and do not constitute an offer to sell, or solicitation of an offer to purchase, any securities, nor does they constitute an endorsement with respect to any investment area or vehicle. This material serves to provide general information to clients and is not meant to be legal or tax advice for any particular investor, which can only be provided by qualified tax and legal counsel. Certain information contained herein is based on outside sources believed to be reliable, but its accuracy is not guaranteed. Investment products (other than deposit products) referenced in this material are not insured by the FDIC (or any other state or federal agency), are not deposits of or guaranteed by Northeast Private Client Group, and are subject to investment risk, including the loss of principal amount invested. Portfolios are subject to investment risks, including possible loss of the principal amount invested. In addition, foreign investments may be less liquid, more volatile and less subject to governmental supervision than in the United States. The values of foreign securities can be affected by changes in currency rates, application of foreign tax laws, changes in governmental administration and economic and monetary policy. Investors should consider the investment objectives, risks, charges, and expenses of ETFs carefully before investing. This and other information are contained in the fund's prospectus, which may be obtained from your investment professional. Please read it before you invest. Investments in ETFs are subject to risk, including possible loss of the principal amount invested. This information is being provided to current Northeast Private Client Group clients and should not be further distributed without Northeast Private Client Group's approval. S&P 500 Index is a market index generally considered representative of the stock market as a whole. The index focuses on the large-cap segment of the U.S. equities market. Dow Jones Industrial Average is a widely used indicator of the overall condition of the stock market, a price-weighted average of 30 actively traded blue chip stocks, primarily industrials, but also includes financial, leisure and other service-oriented firms. Russell 2000 Index measures the performance of the smallest 2,000 companies in the Russell 3000 Index of the 3,000 largest U.S. companies in terms of market capitalization. NASDAQ Composite Index is a market value-weighted index that measures all NASDAQ domestic and non-U.S. based common stocks listed on the NASDAQ stock market. Each company's security affects the index in proportion to its market value. This commentary contains forward-looking statements and projections. Actual results may differ from current expectations based on a number of factors including but not limited to changing market conditions, leverage and underlying asset performance. Northeast Private Client Group makes no representation or warranty, express or implied that this information shall be relied upon as a promise or representation regarding past or future performance. This material contains the current opinions of the author but not necessarily those of Guardian or its subsidiaries and such opinions are subject to change without notice. Past performance is not a guarantee of future results. Indices are unmanaged, and one cannot invest directly in an index. Data and rates used were indicative of market conditions as of the date shown. Opinions, estimates, forecasts, and statements of financial market trends are based on current market conditions and are subject to change without notice. Securities products and advisory services offered through Park Avenue Securities LLC (PAS), member FINRA, SIPC. OSJ: 200 Broadhollow Road Suite 405, Melville, NY 11747, 631-589-5400. PAS is an indirect, wholly-owned subsidiary of The Guardian Life Insurance Company of America® (Guardian), New York, NY. Northeast Private Client Group is not an affiliate or subsidiary of PAS or Guardian. 2019-91500 Exp.3/20.