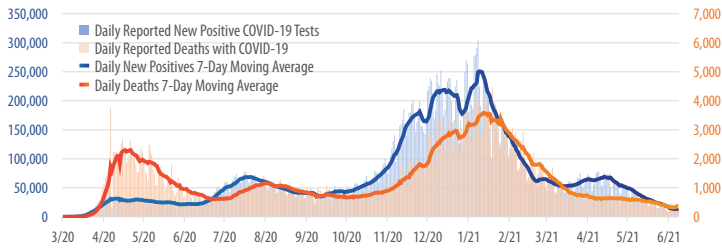


# First Trust COVID-19 TRACKER

## Daily Reported New Positive COVID-19 Tests vs. Daily Reported Deaths from COVID-19 in the U.S.

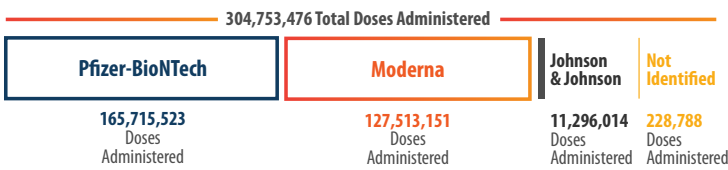
March 1, 2020 - June 8, 2021



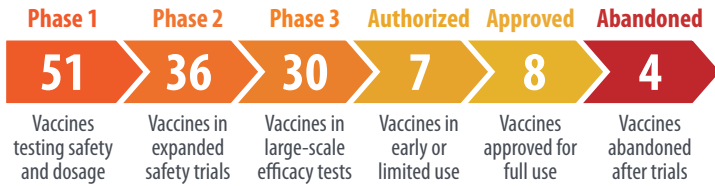
Sources: CDC.gov, First Trust Advisors

## U.S. COVID-19 Vaccine Doses Administered by Vaccine Type

As of June 9, 2021



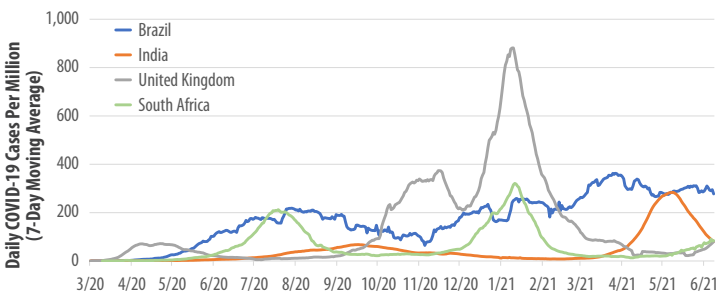
Sources: CDC.gov, First Trust Advisors



Source: The New York Times. Data as of June 8, 2021.

## COVID-19 Cases in Countries with Publicized COVID-19 Variants

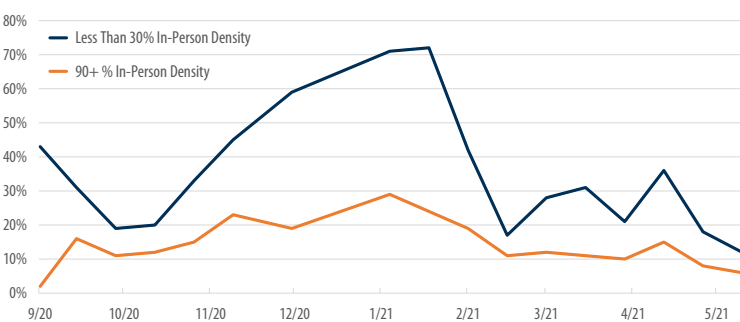
March 1, 2020 - June 8, 2021



Sources: ourworldindata.org, First Trust Advisors

## Student Infection Rate vs. % of Students In-Person

September 14, 2020 - May 23, 2021



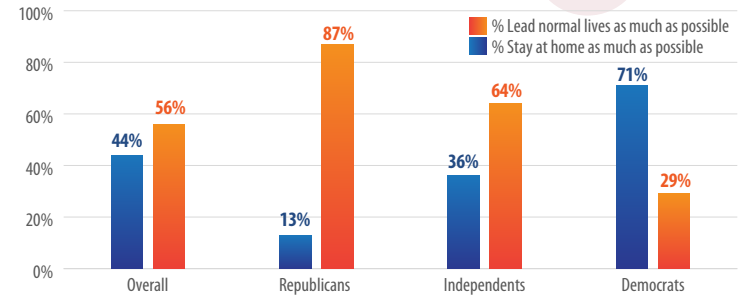
Sources: COVID-19 School Response Dashboard, First Trust Advisors

<sup>1</sup>medrxiv.org (June 5, 2021); <sup>2</sup>nypost.com (June 6, 2021)

A recent study of 52,238 employees of the Cleveland Clinic Health System found that **vaccinations were associated with a significantly lower risk of COVID-19 infection among those with no previous infection of the virus, but not among those who were previously infected.<sup>1</sup> This signals that natural immunity from prior infection is as effective as vaccination.**

## Americans' Preferred Advice for Lifestyle During the Pandemic

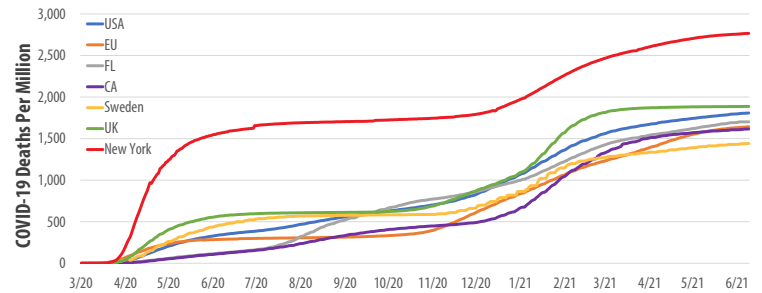
Polling Data for May 2021



Sources: gallup.com, First Trust Advisors

## COVID-19 Deaths Per Million in Places with Very Different Lockdown Policies

March 1, 2020 - June 9, 2021

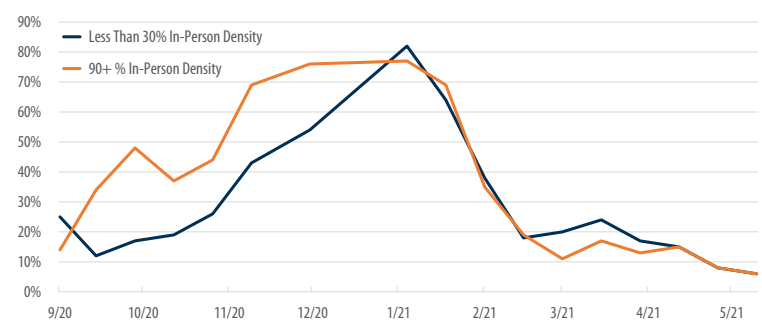


Sources: Census.gov, ourworldindata.org, First Trust Advisors

**The Coronavirus death toll in Alameda County, California has been cut by 25% after officials found that some fatalities were not a "direct result" of the virus.** Previously, any person who died while infected with the virus was included in total COVID-19 deaths for the County.<sup>2</sup> **Similar revisions could have large implications for the current official U.S. COVID-19 death numbers.**

## Staff Infection Rate vs. % of Students In-Person

September 14, 2020 - May 23, 2021



Sources: COVID-19 School Response Dashboard, First Trust Advisors