



# Default vs Current Rates

*Prepared for:* **Richard and Sylvia McAllen**

*Prepared by:*  
**Skip Helms**  
LPL Financial  
Two Town Square Blvd.  
Suite 246  
Asheville, NC 28803  
(828) 654-8100

June 23, 2015

Securities and advisory services offered through LPL Financial – A  
Registered Investment Advisor, Member FINRA/SIPC

# Table of Contents

---

Table of Contents.....2  
Growth Rates Summary.....3  
Cash Flow.....12  
Disclaimer .....14

# Growth Rates Summary

## Base Facts

*Prepared for Richard and Sylvia McAllen*

The Growth Rates Summary report shows assets and the assigned growth models.

### PRE-RETIREMENT RATES OF RETURN

Investment Account Type	Value	Rate of Return	Model Portfolio (Rate)	Allocation %
Qualified Retirement	\$1,500,000	6.96%	Income with Moderate Growth (6.96%)	100.00%

*This analysis must be reviewed in conjunction with the limitations and conditions disclosed in the Disclaimer page. Projections are based on assumptions provided by the advisor/representative, and are not guaranteed. Actual results will vary, perhaps to a significant degree. The projected reports are hypothetical in nature and for illustrative purposes only. Return assumptions do not reflect the deduction of any commissions, or fees or product charges that may apply to any particular investment. Deduction of such charges would result in a lower rate of return. Consult your tax and/or legal advisor before implementing any tax or legal strategies. Past performance is no guarantee of future results. The market for all securities is subject to fluctuation such that upon sale an investor may lose principal.*

*Securities and advisory services offered through LPL Financial "A Registered Investment Advisor, Member FINRA/SIPC"*

# Growth Rates Summary

## Base Facts

*Prepared for Richard and Sylvia McAllen*

The Growth Rates Summary report shows assets and the assigned growth models.

### POST-RETIREMENT RATES OF RETURN

Investment Account Type	Value	Rate of Return	Model Portfolio (Rate)	Allocation %
Qualified Retirement	\$1,500,000	6.96%	Income with Moderate Growth (6.96%)	100.00%

*This analysis must be reviewed in conjunction with the limitations and conditions disclosed in the Disclaimer page. Projections are based on assumptions provided by the advisor/representative, and are not guaranteed. Actual results will vary, perhaps to a significant degree. The projected reports are hypothetical in nature and for illustrative purposes only. Return assumptions do not reflect the deduction of any commissions, or fees or product charges that may apply to any particular investment. Deduction of such charges would result in a lower rate of return. Consult your tax and/or legal advisor before implementing any tax or legal strategies. Past performance is no guarantee of future results. The market for all securities is subject to fluctuation such that upon sale an investor may lose principal.*

*Securities and advisory services offered through LPL Financial "A Registered Investment Advisor, Member FINRA/SIPC"*

# Growth Rates Summary

## Base Facts

*Prepared for Richard and Sylvia McAllen*

The Growth Rates Summary report shows assets and the assigned growth models.

### DEFAULT GROWTH RATES

<b>Assets</b>	<b>Pre-Retirement Rate of Return</b>	<b>Post Retirement Rate of Return</b>
<b>Retirement Assets</b>	Income with Moderate Growth (6.96%)	Income with Moderate Growth (6.96%)
<b>Taxable Investments</b>	Income with Moderate Growth (6.96%)	Income with Moderate Growth (6.96%)
<b>Cash Equivalents</b>	Custom (1.00%)	Custom (2.00%)
<b>529 Plans</b>	By Asset Mix	By Asset Mix
<b>Insurance</b>	<b>Cash Value Growth Rate</b>	<b>Proceeds Reinvested at</b>
<b>Life Insurance</b>	Inflation (3.72%)	Inflation (3.72%)

*This analysis must be reviewed in conjunction with the limitations and conditions disclosed in the Disclaimer page. Projections are based on assumptions provided by the advisor/representative, and are not guaranteed. Actual results will vary, perhaps to a significant degree. The projected reports are hypothetical in nature and for illustrative purposes only. Return assumptions do not reflect the deduction of any commissions, or fees or product charges that may apply to any particular investment. Deduction of such charges would result in a lower rate of return. Consult your tax and/or legal advisor before implementing any tax or legal strategies. Past performance is no guarantee of future results. The market for all securities is subject to fluctuation such that upon sale an investor may lose principal.*

*Securities and advisory services offered through LPL Financial "A Registered Investment Advisor, Member FINRA/SIPC"*

# Growth Rates Summary

## Base Facts

Prepared for Richard and Sylvia McAllen

The Growth Rates Summary report shows assets and the assigned growth models.

## MODEL PORTFOLIOS

The table below displays the underlying assumptions used for the gross growth rates of investment assets. Indexes are unmanaged, are not available for direct investment and they are not indicative of the performance of any particular investment. The index information is updated periodically and the model portfolio growth rates may change over time as the index rates change. Past performance does not guarantee future results.

Market Index	Percent	Rate of Return	Mean Rate	Standard Deviation	Time Period (years)	Period Ending
<b>Inflation Rate</b>						
Consumer Price Index	100.00%	3.72%	3.74%	1.63%	77	3/31/2015
<b>Total</b>	<b>100.00%</b>	<b>3.72%</b>				
<b>Income with Capital Preservation</b>						
Russell 1000 Growth Index	5.00%	8.71%	10.43%	17.45%	20	3/31/2015
Russell 1000 Value Index	5.00%	9.93%	11.24%	15.08%	20	3/31/2015
Russell Midcap Value Index	4.00%	12.36%	13.87%	16.05%	29	3/31/2015
Russell 2000 Value Index	2.00%	10.81%	12.62%	17.70%	20	3/31/2015
MSCI EAFE Index	2.00%	5.56%	7.07%	16.63%	20	3/31/2015
Barclays U.S. Aggregate Bond Index	34.00%	6.00%	6.09%	3.55%	20	3/31/2015
Barclays U.S. 1-3 Year Treasury Bond Index	28.00%	4.04%	4.07%	1.52%	20	3/31/2015
Barclays High Yield Index	4.00%	8.59%	9.03%	8.72%	27	3/31/2015
Cit Non Us World Gov Bond Hedged Index	3.00%	6.47%	6.54%	2.93%	27	3/31/2015
NAREIT	3.00%	9.40%	11.07%	17.08%	30	3/31/2015
Citigroup 3-month T-Bill	10.00%	3.44%	3.46%	0.72%	27	3/31/2015
<b>Total</b>	<b>100.00%</b>	<b>6.09%</b>				
<b>Income with Moderate Growth</b>						
Russell 1000 Growth Index	10.00%	8.71%	10.43%	17.45%	20	3/31/2015
Russell 1000 Value Index	10.00%	9.93%	11.24%	15.08%	20	3/31/2015
Russell Midcap Growth Index	4.00%	11.16%	13.63%	20.70%	29	3/31/2015
Russell Midcap Value Index	4.00%	12.36%	13.87%	16.05%	29	3/31/2015
Russell 2000 Growth Index	2.00%	7.85%	10.89%	23.38%	20	3/31/2015
Russell 2000 Value Index	2.00%	10.81%	12.62%	17.70%	20	3/31/2015
MSCI EAFE Index	5.00%	5.56%	7.07%	16.63%	20	3/31/2015
Barclays U.S. Aggregate Bond Index	30.00%	6.00%	6.09%	3.55%	20	3/31/2015
Barclays U.S. 1-3 Year Treasury Bond Index	16.00%	4.04%	4.07%	1.52%	20	3/31/2015
Barclays High Yield Index	4.00%	8.59%	9.03%	8.72%	27	3/31/2015
Cit Non Us World Gov Bond Hedged Index	3.00%	6.47%	6.54%	2.93%	27	3/31/2015
NAREIT	3.00%	9.40%	11.07%	17.08%	30	3/31/2015
Citigroup 3-month T-Bill	7.00%	3.44%	3.46%	0.72%	27	3/31/2015
<b>Total</b>	<b>100.00%</b>	<b>6.96%</b>				
<b>Growth with Income</b>						
Russell 1000 Growth Index	18.00%	8.71%	10.43%	17.45%	20	3/31/2015
Russell 1000 Value Index	17.00%	9.93%	11.24%	15.08%	20	3/31/2015
Russell Midcap Growth Index	6.00%	11.16%	13.63%	20.70%	29	3/31/2015
Russell Midcap Value Index	6.00%	12.36%	13.87%	16.05%	29	3/31/2015
Russell 2000 Growth Index	3.00%	7.85%	10.89%	23.38%	20	3/31/2015
Russell 2000 Value Index	3.00%	10.81%	12.62%	17.70%	20	3/31/2015
MSCI EAFE Index	7.00%	5.56%	7.07%	16.63%	20	3/31/2015
Barclays U.S. Aggregate Bond Index	21.00%	6.00%	6.09%	3.55%	20	3/31/2015
Barclays U.S. 1-3 Year Treasury Bond Index	8.00%	4.04%	4.07%	1.52%	20	3/31/2015
Barclays High Yield Index	3.00%	8.59%	9.03%	8.72%	27	3/31/2015
Cit Non Us World Gov Bond Hedged Index	3.00%	6.47%	6.54%	2.93%	27	3/31/2015

This analysis must be reviewed in conjunction with the limitations and conditions disclosed in the Disclaimer page. Projections are based on assumptions provided by the advisor/representative, and are not guaranteed. Actual results will vary, perhaps to a significant degree. The projected reports are hypothetical in nature and for illustrative purposes only. Return assumptions do not reflect the deduction of any commissions, or fees or product charges that may apply to any particular investment. Deduction of such charges would result in a lower rate of return. Consult your tax and/or legal advisor before implementing any tax or legal strategies. Past performance is no guarantee of future results. The market for all securities is subject to fluctuation such that upon sale an investor may lose principal.

Securities and advisory services offered through LPL Financial, a Registered Investment Advisor, Member FINRA/SIPC

Market Index	Percent	Rate of Return	Mean Rate	Standard Deviation	Time Period (years)	Period Ending
Citigroup 3-month T-Bill	5.00%	3.44%	3.46%	0.72%	27	3/31/2015
<b>Total</b>	<b>100.00%</b>	<b>7.82%</b>				
<b>Growth</b>						
Russell 1000 Growth Index	23.00%	8.71%	10.43%	17.45%	20	3/31/2015
Russell 1000 Value Index	23.00%	9.93%	11.24%	15.08%	20	3/31/2015
Russell Midcap Growth Index	8.00%	11.16%	13.63%	20.70%	29	3/31/2015
Russell Midcap Value Index	8.00%	12.36%	13.87%	16.05%	29	3/31/2015
Russell 2000 Growth Index	4.00%	7.85%	10.89%	23.38%	20	3/31/2015
Russell 2000 Value Index	3.00%	10.81%	12.62%	17.70%	20	3/31/2015
MSCI EAFE Index	8.00%	5.56%	7.07%	16.63%	20	3/31/2015
MSCI EM Free Index	3.00%	6.80%	9.88%	23.42%	20	3/31/2015
Barclays U.S. Aggregate Bond Index	12.00%	6.00%	6.09%	3.55%	20	3/31/2015
Barclays U.S. 1-3 Year Treasury Bond Index	3.00%	4.04%	4.07%	1.52%	20	3/31/2015
Citigroup 3-month T-Bill	5.00%	3.44%	3.46%	0.72%	27	3/31/2015
<b>Total</b>	<b>100.00%</b>	<b>8.47%</b>				
<b>Aggressive Growth</b>						
Russell 1000 Growth Index	26.00%	8.71%	10.43%	17.45%	20	3/31/2015
Russell 1000 Value Index	26.00%	9.93%	11.24%	15.08%	20	3/31/2015
Russell Midcap Growth Index	10.00%	11.16%	13.63%	20.70%	29	3/31/2015
Russell Midcap Value Index	10.00%	12.36%	13.87%	16.05%	29	3/31/2015
Russell 2000 Growth Index	4.00%	7.85%	10.89%	23.38%	20	3/31/2015
Russell 2000 Value Index	4.00%	10.81%	12.62%	17.70%	20	3/31/2015
MSCI EAFE Index	11.00%	5.56%	7.07%	16.63%	20	3/31/2015
MSCI EM Free Index	4.00%	6.80%	9.88%	23.42%	20	3/31/2015
Citigroup 3-month T-Bill	5.00%	3.44%	3.46%	0.72%	27	3/31/2015
<b>Total</b>	<b>100.00%</b>	<b>9.00%</b>				
<b>SH Growth Model</b>						
SH US Big Cap	40.00%	7.00%	7.00%	14.00%	1	6/30/2014
SH Emerging	15.00%	8.00%	8.00%	25.00%	1	6/30/2014
SH Cash Proxy	10.00%	1.00%	1.00%	0.68%	1	6/30/2014
SH Mid/Small US	25.00%	8.50%	14.00%	14.00%	1	6/30/2014
MSCI EAFE Index	10.00%	5.56%	7.07%	16.63%	20	3/31/2015
<b>Total</b>	<b>100.00%</b>	<b>6.78%</b>				
<b>SH Growth &amp; Income Model</b>						
SH US Big Cap	40.00%	7.00%	7.00%	14.00%	1	6/30/2014
SH EAFE	5.00%	7.00%	7.00%	20.00%	1	6/30/2014
SH Emerging	5.00%	8.00%	8.00%	25.00%	1	6/30/2014
SH Cash Proxy	10.00%	1.00%	1.00%	0.68%	1	6/30/2014
SH High Quality Taxable	25.00%	4.00%	5.00%	7.00%	1	6/30/2014
SH Mid/Small US	15.00%	8.50%	14.00%	14.00%	1	6/30/2014
<b>Total</b>	<b>100.00%</b>	<b>5.92%</b>				
<b>SH Moderate Blend</b>						
SH US Big Cap	30.00%	7.00%	7.00%	14.00%	1	6/30/2014
SH High Quality Taxable	40.00%	4.00%	5.00%	7.00%	1	6/30/2014
SH Cash Proxy	10.00%	1.00%	1.00%	0.68%	1	6/30/2014
SH EAFE	5.00%	7.00%	7.00%	20.00%	1	6/30/2014
SH Mid/Small US	10.00%	8.50%	14.00%	14.00%	1	6/30/2014
SH Emerging	5.00%	8.00%	8.00%	25.00%	1	6/30/2014
<b>Total</b>	<b>100.00%</b>	<b>5.40%</b>				

**Mean:** Simple average, equal to the sum of all values divided by the number of values.

*This analysis must be reviewed in conjunction with the limitations and conditions disclosed in the Disclaimer page. Projections are based on assumptions provided by the advisor/representative, and are not guaranteed. Actual results will vary, perhaps to a significant degree. The projected reports are hypothetical in nature and for illustrative purposes only. Return assumptions do not reflect the deduction of any commissions, or fees or product charges that may apply to any particular investment. Deduction of such charges would result in a lower rate of return. Consult your tax and/or legal advisor before implementing any tax or legal strategies. Past performance is no guarantee of future results. The market for all securities is subject to fluctuation such that upon sale an investor may lose principal.*

Securities and advisory services offered through LPL Financial "A Registered Investment Advisor, Member FINRA/SIPC"

**Rate of Return:** The average annual return for the number of years shown.

**Standard Deviation:** A statistical measure of the volatility based on the distribution of a set of data from its mean (average value). Example: a portfolio with an average return of 10% and a standard deviation of 15% would have a 95% probability (twice the standard deviation) of having a return somewhere between -20% and 40%. Generally, more aggressive portfolios have a higher standard deviation and more conservative portfolios have a lower standard deviation.

By investing in a 529 plan outside of the state in which you pay taxes, you may lose tax benefits offered by the state's plan. Withdrawals used for qualified expenses are federally tax-free. Tax treatment at the state level may vary.

Unless certain criteria is met, Roth IRA owners must be 59 1/2 or older and have held the IRA for 5 years before tax-free withdrawals are permitted.

Variables Annuities are long-term investment vehicles designed for retirement purposes and contain both an investment and insurance component. They are sold by prospectus. Guarantees are based on the claims paying ability of the issuing company. Withdrawals made prior to 59 1/2 are subject to 10% IRS penalty tax and surrender charges may apply. Gains from tax-deferred investments are taxable as ordinary income upon withdrawal. The investment returns and principal value of the available sub-accounts may fluctuate in value. When redeemed the value of the account may be worth more or less than the original value.

Life insurance policies are subject to substantial fees and charges. Investment portfolios are subject to market risk. Death benefit guarantees are subject to the claims-paying ability of the issuing life insurance company. Loans will reduce the policy's death benefit and cash surrender value, and have tax consequences if the policy lapses.

### **Municipal Bond Indexes**

**Barclays Capital 10yr Muni Bond Index** - An unmanaged index comprised of investment grade municipal bonds with a minimum credit rating of Baa and with maturities ranging from 8-12 years.

**Barclays Capital 20yr Muni Bond Index** - An unmanaged index comprised of investment grade municipal bonds with a minimum credit rating of Baa and with maturities ranging from 17-22 years.

**Barclays Capital 7yr Muni Bond Index – The 7 Year (6-8) component of the Municipal Bond Index.** This index is a rules-based, market-value-weighted index engineered for the long-term tax-exempt bond market. To be included in the index, bonds must be rated investment-grade. The bonds must be fixed rate, have a dated-date after December 31, 1990, and must be at least one year from their maturity date. Remarketed issues, taxable municipal bonds, bonds with floating rates, and derivatives, are excluded from the benchmark.

**Barclays Capital 3yr Muni Bond Index** - An unmanaged index comprised of investment grade bonds with a minimum credit rating of Baa and with maturities of greater than two years and less than four years.

**Barclays Capital Municipal Bond Index** - Covers the long term tax exempt bond market. The index has four main sectors: State and Local General Obligation bonds, Revenue bonds, Insured bonds, and Prerefunded bonds.

**Barclays Capital 1-10yr Muni Bond Index** - A rules based, market-value weighted index engineered for the long-term tax exempt market.

### **Taxable Bond Indexes**

**Ibbotson HY Corp Bond Index** - An unmanaged index representing fixed rate, non-investment grade debt. In general, all securities must be rated Ba1 or lower including defaulted issues.

**Barclays Capital High Yield Index** – Covers the universe of fixed rate, non-investment grade debt. Pay-in-kind (PIK) bonds, Eurobonds, and debt issues from countries designated as emerging markets (e.g., Argentina, Brazil, Venezuela, etc.) are excluded, but Canadian and global bonds (SEC registered) of issuers in non-EMG countries are included. Original issue zeroes, step-up coupon structures, and 144-As are also included.

**Ibbotson IT Gov't Bond Index** - An unmanaged index that is representative of a portfolio of Treasury bonds with 10 years to maturity.

**Ibbotson LT Corp Bond Index** - An unmanaged index representing the Salomon Brothers Long-Term High-Grade Corporate Bond Index, which includes nearly all Aaa and Aa-rated bonds with at least 10 years to maturity.

**Ibbotson LT Gov't Bond Index** - An unmanaged index that is representative of a portfolio of Treasury bonds with 20 years to maturity.

**Barclays Capital 1-3yr Treasury Bond Index** - An unmanaged index comprised of investment grade issues with maturities ranging from 1 to (but not including) 3 years.;

This analysis must be reviewed in conjunction with the limitations and conditions disclosed in the Disclaimer page. Projections are based on assumptions provided by the advisor/representative, and are not guaranteed. Actual results will vary, perhaps to a significant degree. The projected reports are hypothetical in nature and for illustrative purposes only. Return assumptions do not reflect the deduction of any commissions, or fees or product charges that may apply to any particular investment. Deduction of such charges would result in a lower rate of return. Consult your tax and/or legal advisor before implementing any tax or legal strategies. Past performance is no guarantee of future results. The market for all securities is subject to fluctuation such that upon sale an investor may lose principal.

Securities and advisory services offered through LPL Financial "A Registered Investment Advisor, Member FINRA/SIPC"



*Barclays Capital Mortgage Bond Index - Covers the fixed-rate agency mortgage-backed pass-through securities of Ginnie Mae (GNMA), Fannie Mae (FNMA), and Freddie Mac (FHLMC). The index is a subset of the U.S. Aggregate Index.*

*Barclays Capital TIPS Index - An unmanaged market index comprised of all U.S. Treasury Inflation Protected Securities rated investment grade (Baa3 or better).*

*Barclays Capital U.S. Aggregate Bond Index - Covers the investment-grade, fixed-rate, taxable bond market of SEC-registered securities. The index includes bonds from the Treasury, Government-Related, Corporate, MBS, ABS, and CMBS sectors. The U.S. Aggregate Index family includes a wide range of standard and customized sub-indices by sector, quality, and maturity.*

*Barclays Capital U.S. Universal Bond Index - The Universal Index represents the union of the U.S. Aggregate Index, U.S. Corporate High-Yield Index, Investment-Grade 144A Index, Eurodollar Index, U.S. Emerging Markets Index, the non-ERISA eligible portion of the CMBS Index, and the CMBS High-Yield Index. The index covers taxable bonds that are rated either investment-grade or below investment-grade.*

### **Large-Cap Equity Indexes**

*Russell 1000 Growth Index - Measures the performance of those Russell 1000 companies with higher price-to-book ratios and higher forecasted growth values.*

*Russell 1000 Index - Measures the performance of the 1,000 largest companies in the Russell 3000 Index, which represents approximately 92% of the total market capitalization of the Russell 3000 Index.*

*Russell 1000 Value Index - Measures the performance of those Russell 1000 companies with lower price-to-book ratios and lower forecasted growth values.*

*Russell 3000 Index - Measures the performance of the 3,000 largest U.S. companies based on total market capitalization, which represents approximately 98% of the investable U.S. equity market.*

*S&P 500 Index - Measures performance of the broad domestic economy through changes in the aggregate market value of 500 stocks representing all major industries. The S&P 500 covers 80% of the U.S. market encompassing more than 100 industry groups.*

*S&P/Citigroup 500 Growth Index - Measures the performance of those S&P 500 companies with higher price-to-book ratios and higher forecasted growth values.*

*S&P/Citigroup 500 Value Index - Measures the performance of those S&P 500 companies with lower price-to-book ratios and lower forecasted growth values.*

### **Mid-Cap Equity Indexes**

*Russell Midcap Growth Index - Measures the performance of those Russell Midcap companies with higher price-to-book ratios and higher forecasted growth values. The stocks are also members of the Russell 1000 Growth index.*

*Russell Midcap Index - Measures the performance of the 800 smallest companies in the Russell 1000 Index, which represent approximately 25% of the total market capitalization of the Russell 1000 Index.*

*Russell Midcap Value Index - Measures the performance of those Russell Midcap companies with lower price-to-book ratios and lower forecasted growth values. The stocks are also members of the Russell 1000 Value index.*

*S&P MidCap 400 Index - Measures the performance of mid-sized companies. The S&P MidCap 400 represents about 7% of U.S. market cap.*

### **Small/Mid-Cap Equity Indexes**

*Russell 2500 Growth Index - Measures the performance of those Russell 2500 companies with higher price-to-book ratios and higher forecasted growth values.*

*Russell 2500 Index - Measures the performance of the 2,500 smallest companies in the Russell 3000 Index, which represents approximately 16% of the total market capitalization of the Russell 3000 Index.*

*Russell 2500 Value Index - Measures the performance of those Russell 2500 companies with lower price-to-book ratios and lower forecasted growth values.*

### **Small-Cap Equity Indexes**

This analysis must be reviewed in conjunction with the limitations and conditions disclosed in the Disclaimer page. Projections are based on assumptions provided by the advisor/representative, and are not guaranteed. Actual results will vary, perhaps to a significant degree. The projected reports are hypothetical in nature and for illustrative purposes only. Return assumptions do not reflect the deduction of any commissions, or fees or product charges that may apply to any particular investment. Deduction of such charges would result in a lower rate of return. Consult your tax and/or legal advisor before implementing any tax or legal strategies. Past performance is no guarantee of future results. The market for all securities is subject to fluctuation such that upon sale an investor may lose principal.

Securities and advisory services offered through LPL Financial "A Registered Investment Advisor, Member FINRA/SIPC"

*Ibbotson Small Co Stock Index - Measures the performance of those companies that have a market capitalization in the lowest 4 percent of the market universe. The market universe is defined as the aggregate of the NYSE, AMEX and NASDAQ NMS firms.*

*Russell 2000 Growth Index - Measures the performance of those Russell 2000 companies with higher price-to-book ratios and higher forecasted growth values.*

*Russell 2000 Index - Measures the performance of the 2,000 smallest companies in the Russell 3000 Index, which represents approximately 8% of the total market capitalization of the Russell 3000 Index.*

*Russell 2000 Value Index - Measures the performance of those Russell 2000 companies with lower price-to-book ratios and lower forecasted growth values.*

*S&P SmallCap 600 Index - Measures the performance of small-sized companies. The S&P SmallCap 600 represents about 3% of U.S. market cap.*

#### **Real Estate Indexes**

*FTSE NAREIT All REITs Index - Consists of all tax-qualified REITs listed on the New York Stock Exchange, American Stock Exchange, and NASDAQ National Market List.*

#### **Energy Indexes**

*S&P Energy Sector Index - The S&P Energy Sector Index comprises companies whose businesses are dominated by either of the following activities: The construction or provision of oil rigs, drilling equipment and other energy related service and equipment, including seismic data collection. Companies engaged in the exploration, production, marketing, refining and/or transportation of oil and gas products, coal and other consumable fuels.*

#### **Commodity Indexes**

*Reuters/Jefferies CRB Index - As a benchmark, the Reuters/Jefferies CRB Index is designed to provide timely and accurate representation of a long-only, broadly diversified investment in commodities through a transparent and disciplined calculation methodology.*

#### **Hedge Indexes**

*CSFB/Tremont Hedge Fund Index - An asset-weighted hedge fund index which separates funds into ten primary subcategories based on their investment style. The index represents at least 85% of the assets under management in each respective category of the index universe.*

*HFR Equity Hedge Index – Equity Hedge, also known as long/short equity, combines core long holdings of equities with short sales of stock or stock index options. Equity hedge portfolios may be anywhere from net long to net short depending on market conditions. Equity hedge managers generally increase net long exposure in bull markets and decrease net long exposure or even are net short in a bear market. Generally, the short exposure is intended to generate an ongoing positive return in addition to acting as a hedge against a general stock market decline. Stock index put options are also often used as a hedge against market risk. Profits are made when long positions appreciate and stocks sold short depreciate. Conversely, losses are incurred when long positions depreciate and/or the value of stocks sold short appreciates. Equity hedge managers' source of return is similar to that of traditional stock pickers on the upside, but they use short selling and hedging to attempt to outperform the market on the downside.*

#### **International Indexes**

*MSCI EAFE Index - Morgan Stanley Capital International's market capitalization weighted index composed of companies representative of the market structure of 20 developed market countries in Europe, Australasia and the Far East. Countries include: Australia, Austria, Belgium, Denmark, Finland, France, Germany, Hong Kong, Ireland, Italy, Japan, Malaysia, Netherlands, New Zealand, Norway, Singapore, Spain, Sweden, Switzerland, and United Kingdom.*

*Dow Jones World Emerging Markets Index - The Dow Jones market capitalization index represents the following 22 emerging markets: Brazil, Bulgaria, Chile, Cyprus, Czech Republic, Estonia, Europe, Hungary, Latvia, Lithuania, Malaysia, Malta, Mexico, Philippines, Poland, Romania, South Africa, South Korea, Slovakia, Slovenia, Taiwan, and Thailand.*

*MSCI Emerging Market Free Price Index - Morgan Stanley Capital International's float-adjusted market capitalization index composed of the following 25 emerging market country indexes: Argentina, Brazil, Chile, China, Colombia, Czech Republic, Egypt, Hungary, India, Indonesia, Israel, Jordan, Korea, Malaysia, Mexico, Morocco, Pakistan, Peru, Philippines, Poland, Russia, South Africa, Taiwan, Thailand, and Turkey.*

*MSCI All Countries World Index ex US – Morgan Stanley Capital International All Country World Index Ex-U.S. is a market-capitalization-weighted index designed to provide a broad measure of stock performance throughout the world, with the exception of U.S.-based companies. The index includes both developed and emerging markets.*

This analysis must be reviewed in conjunction with the limitations and conditions disclosed in the Disclaimer page. Projections are based on assumptions provided by the advisor/representative, and are not guaranteed. Actual results will vary, perhaps to a significant degree. The projected reports are hypothetical in nature and for illustrative purposes only. Return assumptions do not reflect the deduction of any commissions, or fees or product charges that may apply to any particular investment. Deduction of such charges would result in a lower rate of return. Consult your tax and/or legal advisor before implementing any tax or legal strategies. Past performance is no guarantee of future results. The market for all securities is subject to fluctuation such that upon sale an investor may lose principal.

Securities and advisory services offered through LPL Financial "A Registered Investment Advisor, Member FINRA/SIPC"

*Citigroup World Government Bond Index - Citigroup's market capitalization weighted index tracks the returns of government bonds in the following countries: Australia, Austria, Belgium, Canada, Denmark, Finland, France, Germany, Greece, Ireland, Italy, Japan, the Netherlands, Norway, Poland, Portugal, Singapore, Spain, Sweden, Switzerland, the United Kingdom, and the United States. Market eligibility depends on both market capitalization and investability.*

*Cit Non US World Gov Bond Hedged Index – Citigroup World Government Bond Index ex-US – Hedged Index is a market capitalization weighted index consisting of the government bonds of the following countries: Austria, Belgium, Canada, Denmark, Finland, France, Germany, Greece, Ireland, Italy, Japan, the Netherlands, Norway, Poland, Portugal, Singapore, Spain, Sweden, Switzerland, and the United Kingdom. This index represents the WGBI ex-U.S. hedged back to the U.S. Dollar.*

**Metals Indexes**

*PHLX Gold Silver Index - A capitalization-weighted index composed of 16 companies involved in the gold and silver mining industry.*

**Other Indexes**

*30 Day T-Bill Rate - From Ibbotson Associates, provides the rate on debt obligations of the US Treasury that have maturities of one year or less. Maturities for T-bills are usually 91 days, 182 days, or 52 weeks.*

*Citigroup 3-month T-Bill – Measures monthly return equivalents of yield averages that are not marked to market. The Three-Month Treasury bill Indexes consist of the last three three-month Treasury bill issues.*

*Consumer Price Index - Cost of living index that measures the change in the cost of a fixed basket of products and services, including housing, electricity, food, and transportation.*

*Indices are unmanaged and cannot be invested into directly. Past performance is no guarantee of future results.*

*Investing in real estate/REITs involves special risks such as potential illiquidity and may not be suitable for all investors. There is no assurance that the investment objectives of this program will be attained.*

*Mid-capitalization companies are subject to higher volatility than those of large-capitalized companies.*

*Small-cap stocks may be subject to a higher degree of risk than more established companies' securities. The illiquidity of the small-cap market may adversely affect the value of these investments.*

*Municipal bonds are subject to market and interest rate risk if sold prior to maturity. Bond values will decline as interest rates rise. Interest income may be subject to the alternative minimum tax. Federally tax-free but other state and local taxes may apply.*

*International and emerging market investing involves special risks such as current fluctuation and political instability and may not be suitable for all investors.*

*The fast price swings of commodities will result in significant volatility in an investor's holdings.*

*This analysis must be reviewed in conjunction with the limitations and conditions disclosed in the Disclaimer page. Projections are based on assumptions provided by the advisor/representative, and are not guaranteed. Actual results will vary, perhaps to a significant degree. The projected reports are hypothetical in nature and for illustrative purposes only. Return assumptions do not reflect the deduction of any commissions, or fees or product charges that may apply to any particular investment. Deduction of such charges would result in a lower rate of return. Consult your tax and/or legal advisor before implementing any tax or legal strategies. Past performance is no guarantee of future results. The market for all securities is subject to fluctuation such that upon sale an investor may lose principal.*

*Securities and advisory services offered through LPL Financial "A Registered Investment Advisor, Member FINRA/SIPC"*

# Cash Flow

## Base Facts vs. 2015 Rates (All Years)

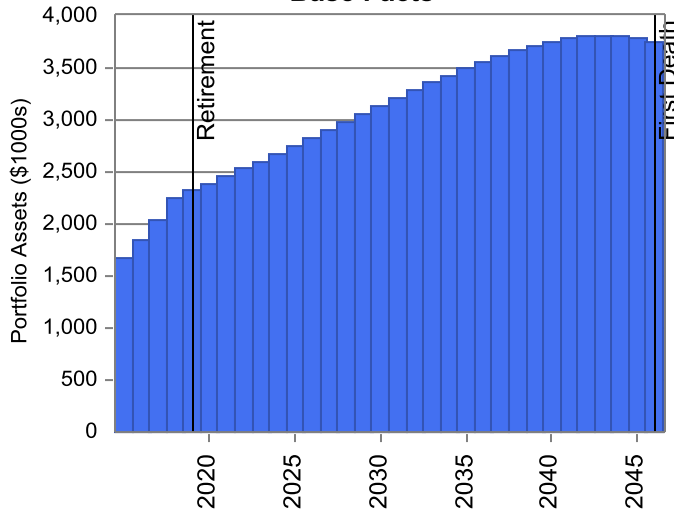
Prepared for Richard and Sylvia McAllen

The Cash Flow report illustrates your income, savings, expenses, and resulting net cash flow on an annual basis.

Based upon the levels of income and spending in the *Base Facts*, your portfolio assets will last through at least **2046** (age **92/92**).

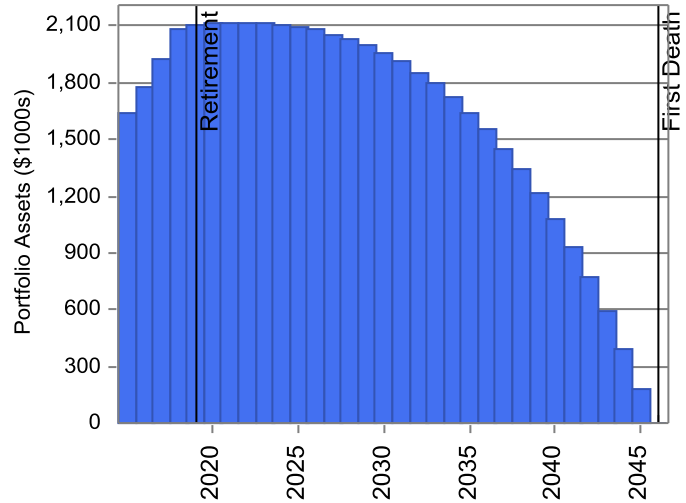
Based upon the levels of income and spending in the *2015 Rates*, you will deplete your portfolio assets in **2046** (age **92/92**).

**Portfolio Assets  
Base Facts**



■ Portfolio Assets

**Portfolio Assets  
2015 Rates**



■ Portfolio Assets

### RELEVANT FACTS

Richard's Retirement: 2019 (65)  
 Sylvia's Retirement: 2019 (65)  
 First Death (Richard): 2046 (92/92)

#### LIVING EXPENSES

Current: \$140,000  
 Retirement: \$87,000  
 After First Death: \$87,000  
 Indexed at: 3.72%  
 Inflation Rate: 3.72%

### RELEVANT FACTS

Richard's Retirement: 2019 (65)  
 Sylvia's Retirement: 2019 (65)  
 First Death (Richard): 2046 (92/92)

#### LIVING EXPENSES

Current: \$140,000  
 Retirement: \$87,000  
 After First Death: \$87,000  
 Indexed at: 3.72%  
 Inflation Rate: 3.72%

*This analysis must be reviewed in conjunction with the limitations and conditions disclosed in the Disclaimer page. Projections are based on assumptions provided by the advisor/representative, and are not guaranteed. Actual results will vary, perhaps to a significant degree. The projected reports are hypothetical in nature and for illustrative purposes only. Return assumptions do not reflect the deduction of any commissions, or fees or product charges that may apply to any particular investment. Deduction of such charges would result in a lower rate of return. Consult your tax and/or legal advisor before implementing any tax or legal strategies. Past performance is no guarantee of future results. The market for all securities is subject to fluctuation such that upon sale an investor may lose principal.*

Securities and advisory services offered through LPL Financial "A Registered Investment Advisor, Member FINRA/SIPC"

# Cash Flow

## Base Facts vs. 2015 Rates (All Years)

Prepared for Richard and Sylvia McAllen

The Cash Flow report illustrates your income, savings, expenses, and resulting net cash flow on an annual basis.

Year	Age	Base Facts			Total Portfolio Assets	2015 Rates			Total Portfolio Assets
		Total Inflows	Total Outflows	Net Cash Flow		Total Inflows	Total Outflows	Net Cash Flow	
2015	61/61	\$250,000	\$219,536	\$30,464	\$1,668,864	\$250,000	\$219,536	\$30,464	\$1,635,714
2016	62/62	259,300	227,526	31,774	1,849,543	259,300	227,526	31,774	1,778,609
2017	63/63	268,946	236,490	32,456	2,043,153	268,946	236,490	32,456	1,929,351
2018	64/64	278,951	245,016	33,935	2,250,359	278,951	245,016	33,935	2,088,090
2019	65/65	<b>22,364</b>	<b>100,686</b>	<b>(78,322)</b>	<b>2,319,709</b>	<b>22,364</b>	<b>100,686</b>	<b>(78,322)</b>	<b>2,102,842</b>
2020	66/66	23,196	107,983	(84,787)	2,392,872	23,196	107,983	(84,787)	2,115,550
2021	67/67	24,059	121,290	(97,231)	2,462,069	24,059	121,290	(97,231)	2,118,729
2022	68/68	24,954	125,421	(100,467)	2,532,720	24,954	125,421	(100,467)	2,118,736
2023	69/69	25,883	130,086	(104,203)	2,604,543	25,883	130,086	(104,203)	2,115,002
2024	70/70	121,766	134,292	(12,526)	2,678,113	103,899	134,390	(30,491)	2,107,743
2025	71/71	128,896	139,946	(11,050)	2,752,390	107,351	139,962	(32,611)	2,095,705
2026	72/72	136,382	145,130	(8,748)	2,827,683	110,705	145,152	(34,447)	2,078,932
2027	73/73	144,425	150,518	(6,093)	2,903,908	114,079	150,542	(36,463)	2,057,044
2028	74/74	153,073	156,115	(3,042)	2,980,961	117,452	156,143	(38,691)	2,029,627
2029	75/75	162,393	162,012	381	3,058,642	120,803	161,958	(41,155)	1,996,245
2030	76/76	172,430	168,847	3,583	3,136,066	124,104	167,981	(43,877)	1,956,449
2031	77/77	182,402	175,992	6,410	3,212,727	126,888	174,220	(47,332)	1,909,763
2032	78/78	193,702	183,687	10,015	3,287,873	129,962	180,713	(50,751)	1,855,651
2033	79/79	204,851	191,489	13,362	3,361,087	132,375	187,429	(55,054)	1,793,585
2034	80/80	216,607	199,674	16,933	3,431,668	134,504	194,417	(59,913)	1,722,964
2035	81/81	228,995	208,167	20,828	3,498,929	136,272	201,641	(65,369)	1,643,196
2036	82/82	242,039	217,039	25,000	3,562,042	137,588	209,142	(71,554)	1,553,622
2037	83/83	255,762	226,283	29,479	3,620,112	138,340	216,920	(78,580)	1,453,555
2038	84/84	270,184	235,924	34,260	3,672,136	138,388	224,995	(86,607)	1,342,255
2039	85/85	283,712	245,571	38,141	3,717,414	136,945	233,369	(96,424)	1,218,947
2040	86/86	297,725	255,583	42,142	3,754,904	134,399	242,064	(107,665)	1,082,800
2041	87/87	312,207	265,941	46,266	3,783,504	130,511	251,078	(120,567)	932,948
2042	88/88	327,129	276,657	50,472	3,802,016	124,980	260,422	(135,442)	768,474
2043	89/89	342,453	287,726	54,727	3,809,162	117,432	270,112	(152,680)	588,403
2044	90/90	355,474	298,490	56,984	3,804,231	106,942	280,136	(173,194)	391,729
2045	91/91	368,467	309,561	58,906	3,785,993	93,607	290,591	(196,984)	177,309
2046	92/92	<b>381,329</b>	<b>320,870</b>	<b>60,459</b>	<b>3,753,228</b>	<b>76,790</b>	<b>292,080</b>	<b>(215,290)</b>	<b>(46,660)</b>

This analysis must be reviewed in conjunction with the limitations and conditions disclosed in the Disclaimer page. Projections are based on assumptions provided by the advisor/representative, and are not guaranteed. Actual results will vary, perhaps to a significant degree. The projected reports are hypothetical in nature and for illustrative purposes only. Return assumptions do not reflect the deduction of any commissions, or fees or product charges that may apply to any particular investment. Deduction of such charges would result in a lower rate of return. Consult your tax and/or legal advisor before implementing any tax or legal strategies. Past performance is no guarantee of future results. The market for all securities is subject to fluctuation such that upon sale an investor may lose principal.

Securities and advisory services offered through LPL Financial "A" Registered Investment Advisor, Member FINRA/SIPC

# Disclaimer

---

The following report is a diagnostic tool intended to review your current financial situation and suggest potential planning ideas and concepts that may be of benefit. The purpose of the report is to illustrate how accepted financial and estate planning principles may improve your current situation.

This report is based upon information and assumptions provided by you (the client). This report provides broad and general guidelines on the advantages of certain financial planning concepts and does not constitute a recommendation of any particular technique. We recommend that you review your plan annually, unless changes in your personal or financial circumstances require more frequent review.

The term "plan" or "planning," when used within this report, does not imply that a recommendation has been made to implement one or more financial plans or make a particular investment. Nor does the plan or report provide legal, accounting, financial, tax or other advice. Rather, the report and the illustrations therein provide a summary of certain potential financial strategies. The reports provide projections based on various assumptions and are therefore hypothetical in nature and not guarantees of investment returns. You should consult your tax and/or legal advisors before implementing any transactions and/or strategies concerning your finances.

Additionally, this report may not reflect all holdings or transactions, their costs, or proceeds received by you. Prices that may be indicated in this report are obtained from sources we consider reliable but are not guaranteed. Past performance is no guarantee of future performance and it is important to realize that actual results may differ from the projections contained in this report. The presentation of investment returns set forth in this report do not reflect the deduction of any commissions or fees or product charges that may apply to any particular investment. Deduction of such charges will result in a lower rate of return as compared to that set forth in this report.

The information contained in this report is not written or intended as financial, tax or legal advice. The information provided herein may not be relied on for purposes of avoiding any federal tax penalties. You are encouraged to seek financial, tax and legal advice from your professional advisors.

This report may be provided as part of a financial plan being offered either through LPL Financial or a third-party registered investment advisor. Please refer to the financial planning agreement you signed for further information about the parties providing services.

This report may or may not contain general or specific recommendations for implementation. Please understand that you are under no obligation to implement any recommendations that may be included within this report or the financial plan; however, if you choose to, you may implement through a financial advisor associated with LPL Financial. You may decide to implement through the purchase or sale of one or more securities or insurance products on a commission basis or through asset management services in an investment advisory relationship for an ongoing fee. Please refer to the client agreement and any disclosure documents related to any implementation services you choose for further information.

LPL Financial representatives offer access to Trust Services through The Private Trust Company N.A., an affiliate of LPL Financial.

*Investors should consider the investment objectives, risks, charges, and expenses of the investment company carefully before investing. The prospectus contains this and other information about the investment company. You can obtain a prospectus from your financial representative. Read carefully before investing.*

I/We have received and read this Disclaimer page and understand its contents and, therefore, the limitations of the report. Furthermore, I understand that none of the calculations and presentations of investment returns are guaranteed.

Client(s): \_\_\_\_\_  
Richard McAllen

\_\_\_\_\_  
Date

\_\_\_\_\_  
Sylvia McAllen

\_\_\_\_\_  
Date

Advisor: \_\_\_\_\_  
Skip Helms

\_\_\_\_\_  
Date

*This analysis must be reviewed in conjunction with the limitations and conditions disclosed in the Disclaimer page. Projections are based on assumptions provided by the advisor/representative, and are not guaranteed. Actual results will vary, perhaps to a significant degree. The projected reports are hypothetical in nature and for illustrative purposes only. Return assumptions do not reflect the deduction of any commissions, or fees or product charges that may apply to any particular investment. Deduction of such charges would result in a lower rate of return. Consult your tax and/or legal advisor before implementing any tax or legal strategies. Past performance is no guarantee of future results. The market for all securities is subject to fluctuation such that upon sale an investor may lose principal.*

Securities and advisory services offered through LPL Financial "A Registered Investment Advisor, Member FINRA/SIPC